

# LIFE 7 GENETICS 2

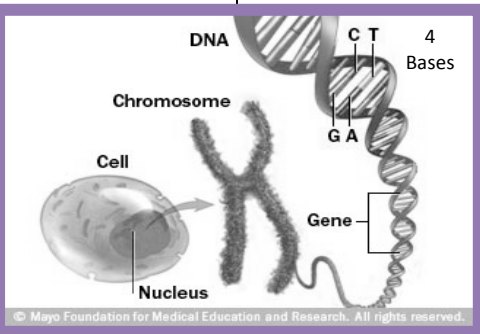
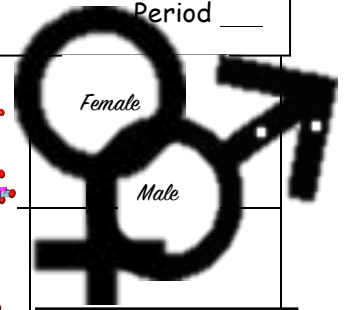
Calendar December 2018

Science 8 Mrs. Plyter [plyter.com/science](http://plyter.com/science)

Name \_\_\_\_\_

Period \_\_\_\_\_

Thu



**4**

## DNA Model

Your DNA Model must be connected and hanging from the ceiling!

Use a Handout and the Video directions.  
Science → Life → Genetics

If you want paper directions, ask.

Check 10 \_\_\_\_\_

**5**

## DNA Lab Observe DNA by getting it to absorb water!

- 1) Lab Protocol \_\_\_\_\_
- 2) Identify DNA \_\_\_\_\_
- 3) Collect only DNA \_\_\_\_\_
- 4) Dry DNA \_\_\_\_\_

20+ \_\_\_\_\_

**6**

## Watch the DNA Videos

Have Screen Checked:

- 1) What is DNA & How Does it Work?

DNA = \_\_\_\_\_

DNA tells \_\_\_\_\_ how to line up.

Check \_\_\_\_\_

- 2) What is DNA? Red Orbit.

The packaged form of DNA are the \_\_\_\_\_

A GENOME is \_\_\_\_\_

Each part of the DNA molecule that is a code or sequence that contains instructions for a trait is a \_\_\_\_\_.

Check \_\_\_\_\_

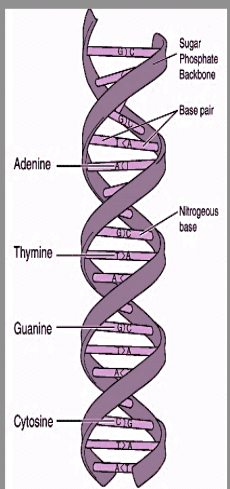
If Time:

## Genetics Online:

Have Screen Checked:

- 1) Click & Clone \_\_\_\_\_
- 2) Cloning or Not? \_\_\_\_\_
- 3) Gel Electrophoresis \_\_\_\_\_
- 4) Mr. W's DNA Rap \_\_\_\_\_

DNA Workshop: iMac Desktop \_\_\_\_\_



## Family Pedigree Tree

# \_\_\_\_\_ New People

# \_\_\_\_\_ New Generations

Check \_\_\_\_\_

**Points:**  
Family Pedigree

DNA Model

DNA Lab

Calendar & Video Points

**Quiz Points:**  
Initial in Color

Mon \_\_\_\_\_

Tue \_\_\_\_\_

Wed \_\_\_\_\_

Thu \_\_\_\_\_

Fri \_\_\_\_\_

**Total** \_\_\_\_\_

## Central Science Home Page:

[www.plyter.com/science](http://www.plyter.com/science)

Central Science → Life Science → Genetics

DNA Origami Folding Instructions

What is DNA & How does it Work?

Click and Clone

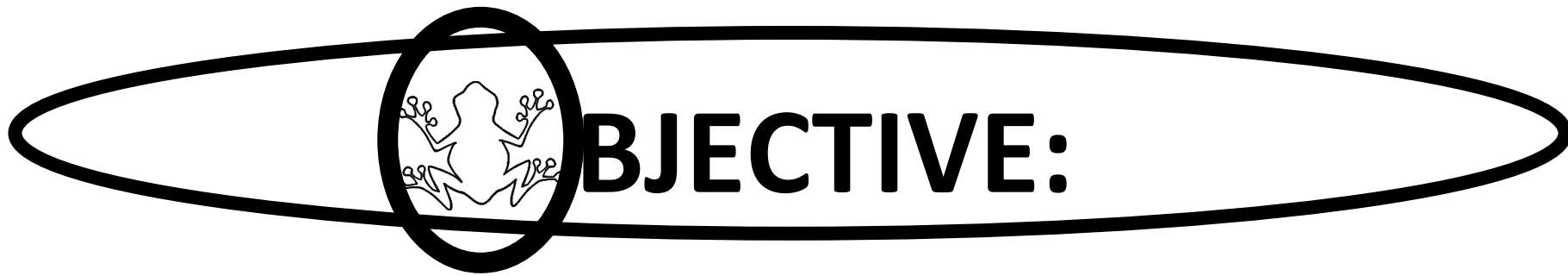
Gel Electrophoresis Lab

Cloning or Not?

Mr. W's DNA Rap

What is DNA? Red Orbit

iMac Desktop: Ask: DNA Workshop (iMac) → Desktop → Double click.



# OBJECTIVE:

Write the Objective: \_\_\_\_\_

\_\_\_\_\_

\_\_\_\_\_

\_\_\_\_\_

\_\_\_\_\_

\_\_\_\_\_

\_\_\_\_\_

\_\_\_\_\_

### Label this Family Pedigree

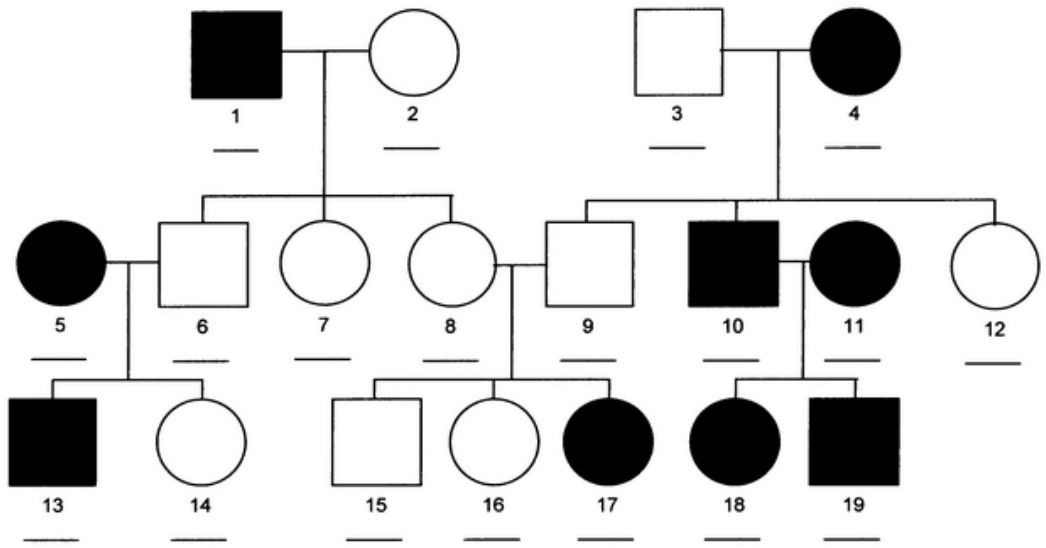
as if it were yours.

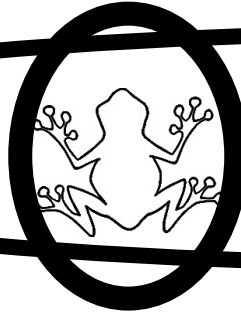
Using relationship terms.

Label #8 Mom.

#9 is Dad.

# 15 or #16 should be you ("Me").





## **OBJECTIVE:**

To better understand heredity, including that reproduction gives rise to likenesses and variations (differences) from parents to offspring, by modeling and viewing DNA. (MS-LS3)