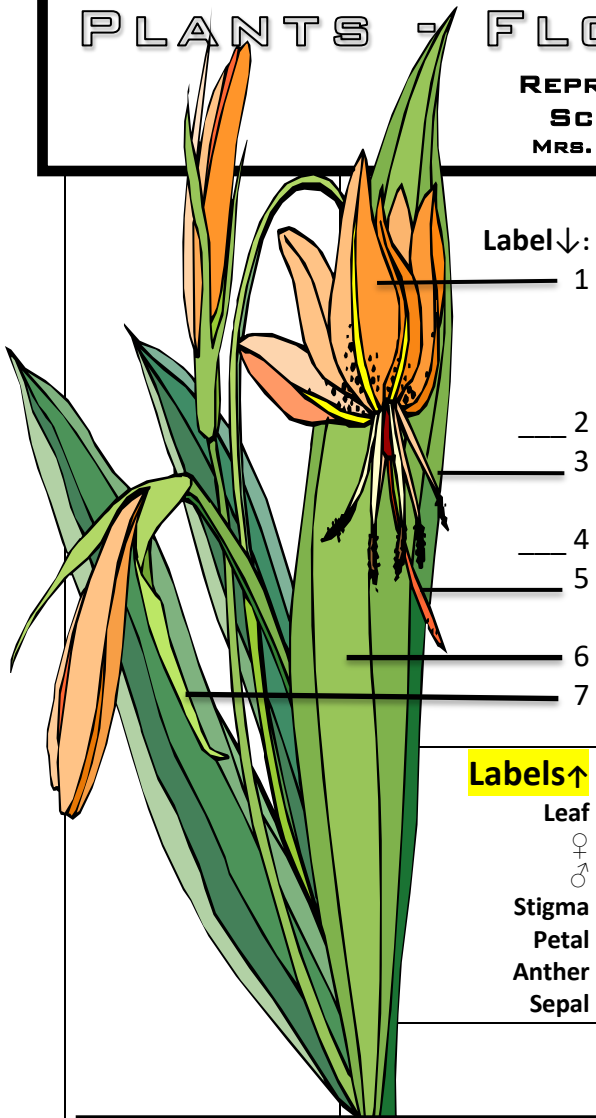


# PLANTS - FLOWERS 2020

REPRODUCTION OF SEED PLANTS  
 SCIENCE 8 FEBRUARY 2020  
 MRS. PLYTER WWW.PLYTER.COM/SCIENCE



Label ↓:

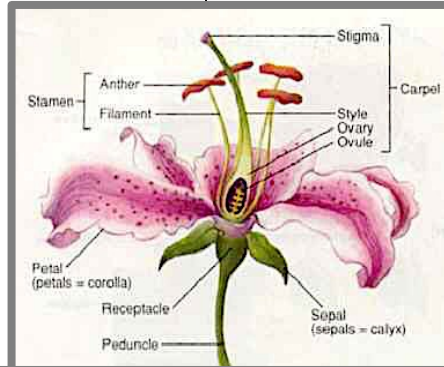
- 1
- 2
- 3
- 4
- 5
- 6
- 7

Labels ↑

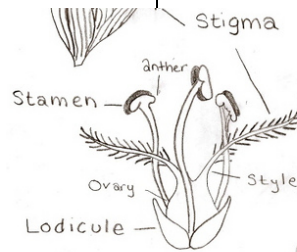
- Leaf
- ♀
- ♂
- Stigma
- Petal
- Anther
- Sepal

## FLOWER LAB

# 26



↑Basic Complete Flower Anatomy ↑  
 Lily Flower with Both ♂ & ♀ Parts



↑Complete Flower Anatomy ↑  
 Grass Flower with Both ♂ & ♀ Parts

Name \_\_\_\_\_

Period \_\_\_\_\_

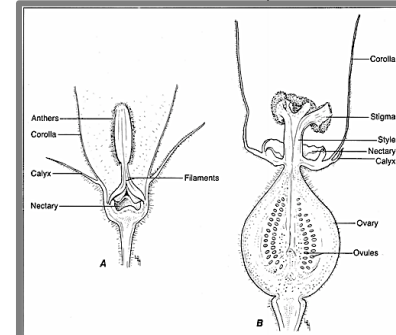
Thur

Fri

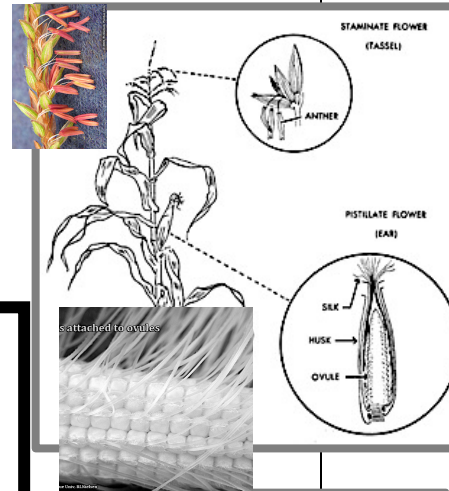
# 27

# 28

## MACRO PHOTO



↑Incomplete Flowers  
 Separate ♂ & ♀ Pumpkin Flowers



↑Incomplete Flowers  
 Separate ♂ & ♀ Corn Flowers

**Points:**  
 Objective + Grade

**Highlight all  
 Flower Labels**

← Calendar →  
 Front and Back  
 Blanks

Flower Lab

Macro Photo

Online:  
 Life Cycle  
 Diagram+

Quiz Points  
**Initial in Color:**

Mon \_\_\_\_\_

Tue \_\_\_\_\_

Wed \_\_\_\_\_

Thu \_\_\_\_\_

Total \_\_\_\_\_

What2Learn

Fri \_\_\_\_\_

**Central Science:** [plyter.com/science](http://plyter.com/science)

[Have Screen Checked...or take a photo or Screenshot](#)

Practice Tests → [Mygradebook.com](http://Mygradebook.com) → [plyter20](#) Student #

Google Classroom → Macro Photo Assignment Code: yzbxn →

Life Science Page → Plants →

→ Plant Life Cycles → Life Cycles → Life Cycle Diagram \_\_\_\_\_ → Flower Anatomy \_\_\_\_\_

**If TIME:** → Plants in Motion (Ask for a Handout) \_\_\_\_\_

Discovery Education 24yearlastf Student # → Flower Power: Interaction \_\_\_\_\_ Movie. \_\_\_\_\_

→ Dancing Bees \_\_\_\_\_ Pollination by Wind \_\_\_\_\_

**Figure our Grade!**

**Yours/Required**

- Objective + Grade \_\_\_/10
- Highlight \_\_\_/5
- Cycles \_\_\_/15
- Bean Lab \_\_\_/10
- Corn Lab \_\_\_/15
- NOVA \_\_\_/18
- Online \_\_\_/5
- Quizzes \_\_\_/24
- What2Learn \_\_\_/10
- Extra \_\_\_\_\_

**Totals** \_\_\_\_\_ /112

**Divide for your %**  
 \_\_\_\_\_ / \_\_\_\_\_ X 100

= **Your %** \_\_\_\_\_

**In the Gradebook:**

**Gradebook %** \_\_\_\_\_:

**Your Points** \_\_\_\_\_

**Total Points** \_\_\_\_\_

**Extra Points, if you**

figure out how many points you would need to get to the next grade.

Multiply Total Points by  
 0.9 for an A      0.8 for a B  
 0.7 for a C      0.6 for a D

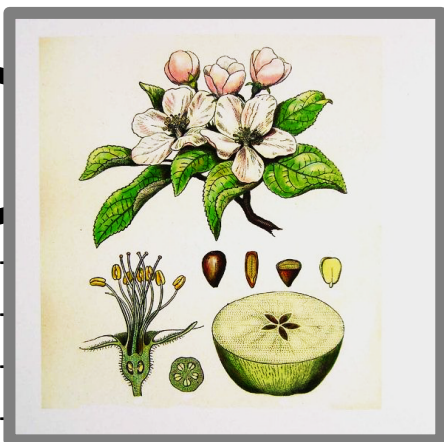
**Have an A? Help someone!**

\_\_\_\_\_ X \_\_\_\_\_ = \_\_\_\_\_

Subtract  
 \_\_\_\_\_ - \_\_\_\_\_ = \_\_\_\_\_

You need \_\_\_\_\_ points

To get to a/an \_\_\_\_\_



**Name the Flowers and their parts (Squash, Grass, Dandelion and Corn) Use the front of this Calendar for help.)**



- 1. \_\_\_\_\_ Flower
- 2. Flower part: \_\_\_\_\_



7. \_\_\_\_\_ Flowers

8. Flower part: \_\_\_\_\_

9. Flower part: \_\_\_\_\_



10. Flower part: \_\_\_\_\_



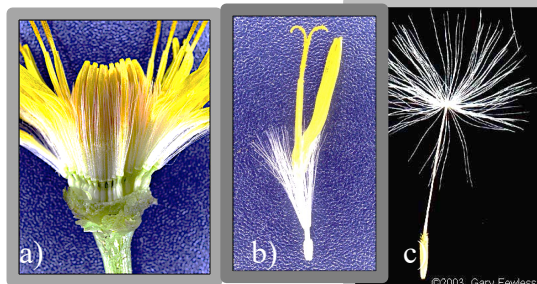
3. \_\_\_\_\_  
 Flowers

Male or female (flower)?

4. \_\_\_\_\_

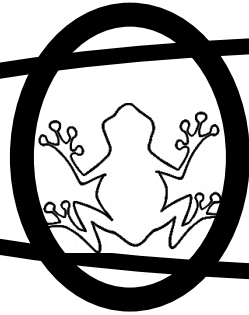
5. \_\_\_\_\_

6. Flower part: \_\_\_\_\_



11. Dandelion Flowers  
 ← are called "Composites".

They have many tiny flowers called florets on one head. ← At left,  
 a) flower head, b) floret  
 c) \_\_\_\_\_



# OBJECTIVE



Demonstrate  
an understanding and an  
appreciation of the cycles of  
flowering plants, by  
identifying, dissecting,  
drawing, and photographing flowers  
and their structures.