

PLANTS 1 2018

Science 8 March 2018

Mrs. Plyter www.plyter.com/science

Name _____

Period _____

Tree 1

Tree 1: Cut in 2010

first year growth
rainy season
dry season
scar from forest fire



Tue

6

Stems: 30+ _____

Wed

7

Leaves: 10 _____
Stoma Lab



Points: Objective

Calendar

Stems

Leaves

Online

Quizzes

Tue _____

Wed _____

Thur _____

Fri _____

Total _____

- Use a pencil to mark each growth ring (year of growth) on Tree 1 ↗.
- The fire happened in the year _____. The tree was cut at age ____ yrs.

Trees A, B & C.

Tree A: Sampled in 2010

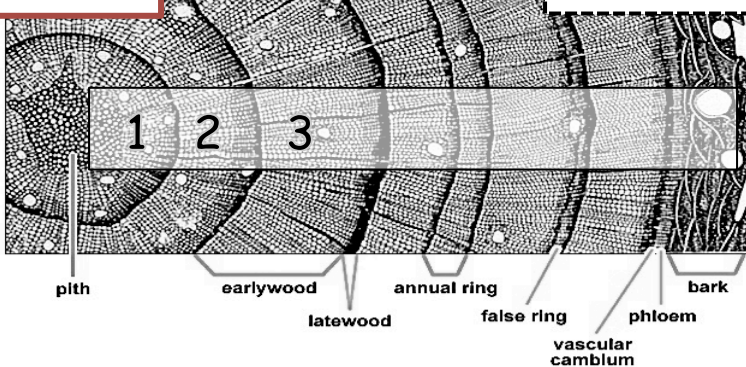


- Of the three trees, A, B & C, Tree _____ lived most recently.
- Starting at left, use a pencil to mark each 10 years for Tree C. On a 10, move directly up ↑ to Tree B. Continue counting..& then on a 10, move directly up ↑ to Tree A. Continue counting.
- Determine the year that Tree C started growing. _____

Tree 2

Cross Section of a CONIFER

Microscopic View

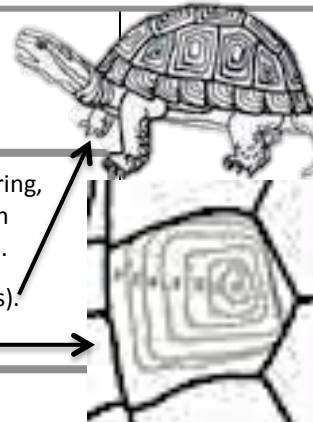


- Continue to number each year's growth ring. The tree was ____ years old.
- Its ____ year was its best growing season. The ____ year was its worst.

Animals

Growth rings show times of rapid growth. In trees, this is usually each spring, and evidence of age in years. In animals, rapid growth "rings" show up on shells, scales, & hooves. Rings might match years of life, but DO match cycles of growth.

- Count the tortoise's growth rings →. This tortoise has had _____ molts (maybe years).
- Count the growth rings on the single scute (scale) drawing. _____



Science Home Page: www.plyter.com/science

Online Assignments:

Have Screen Checked! Or take a screen shot...or photo.

Life → Plants →

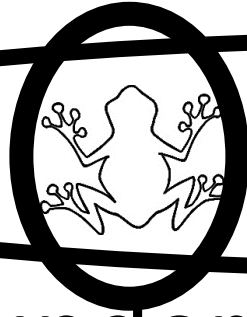
The Simple Story of Photosynthesis _____

Build a Tree → Show Specimen Tree _____

NFS Dendrochronology _____

Bill Nye Photosynthesis _____

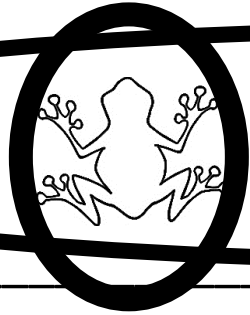




OBJECTIVE:

To better understand that body cells form tissues and organs that work together for specific body functions of organisms:

- 1) **Leaves** for photosynthesis: observe, draw & label leaf stomata. LS1.a
- 2) **Stems** for support of leaves and transportation of materials: observe evidence; draw and/or organize data.



OBJECTIVE:

Write the Equations for:
Photosynthesis

Respiration