

# ❁❁ MAY-JUNE 2❁19

## Science 8

Mrs. Plyter [www.plyter.com/science](http://www.plyter.com/science)

Name

Period

Watch the Board for Due Dates...

Write Below:

Microbes +  
Animal Kingdom

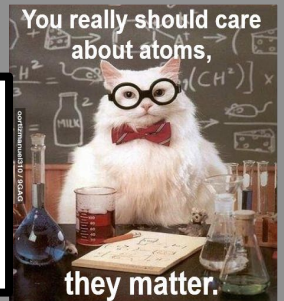
Worms  
Earthworm

Arthropods  
Crayfish

Isopods

Frog Packet  
Animal Kingdom

Inquiry-  
Engineering



Mon  
**29**  
MICROBES

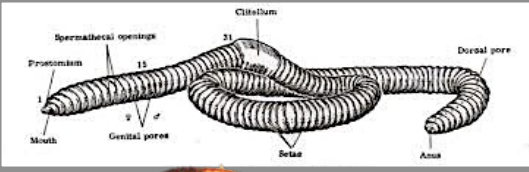
Tue  
**30**

Wed  
**1**

Thur  
**2**  
ANIMAL KINGDOM

Fri  
**3**  
Invertebrates

**6**



**9**  
EARTHWORMS

**10**

**13**  
ARTHROPODS

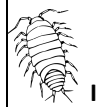


**15**  
CRAYFISH

**16**

**17**

**20**



**21**  
ISOPODS

**22**  
Finance..Yakima

**23**  
Vertebrates: FROGS

**25**

**27**  
Memorial Day

**28**

**29**



**31**

**3**

**4**  
INQUIRY

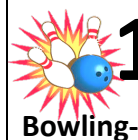
**5**

**6**  
Blue Mountain Wildlife



Life is Science....  
....Science is Life  
....Be There!

Stop by! ....Mrs. Plyter



**11**  
Bowling-

**12**  
Promotion

### Central Science Page

[www.plyter.com/science](http://www.plyter.com/science)

McGraw Hill → BrainPOP

Life → Cells - Microbes → Microbes:

Animals →

+ See Assignment Directions..



