

# Arthropod Mix-ups

A close-up photograph of a red and black spotted bug, likely a firebug, perched on a pink flower. The bug has a red body with black spots and bands. The flower is light pink with yellow stamens. The background is a soft-focus green leaf.

Is that Bug  
that Bugs you a Bug?

By Joyce Plyter

[www.cactus-art.biz](http://www.cactus-art.biz)

# BUGS and BEETLES:

- Both are Insects
- 2 Pair (4) Wings

## A TRUE BUG →

- Wings Fold to Form an X



Green Shield BUG:



Milkweed BUG

## A BEETLE →

- Hard Top
- Wings Meet in a Straight Line.



Lady BEETLE



Green June BEETLE



# SPIDERS and INSECTS:



[www.blevinsphoto.com/argiope.htm](http://www.blevinsphoto.com/argiope.htm)

## SPIDER:

- 4 Pair (8) of Legs
- Garden Spider



[insects.tamu.edu/extension/youth/bug/bug147.html](http://insects.tamu.edu/extension/youth/bug/bug147.html)

## INSECT:

- 3 Pair (6) of Legs
- Velvet Ant

# ISOPODS and INSECTS:



## ← ISOPOD:

- 7 Pair of Legs (14)
- 7 Similar Body Segments

## ← Common Names:

Sowbug                      Wood Louse  
Potato Bug                Armadillo Bug  
Roly-poly

## INSECT:

- 3 Pair(6) of Legs →
- 2 Pair Wings

## Potato BEETLE:→

- Hard Top Wings Meet in a Straight Line

Common Name: Potato BUG→.





# FLIES and FLEAS:

- Both are Insects
- 3 Pair (6) Legs



## FLY:

- 1 Pair (2) Clear Wings

Green Bottle Fly



## FLEA:

- No Wings
- Legs Adapted for Jumping
- External Parasites

Dog Flea

# SPIDER CRAB and CRAB SPIDER:



## Crab Spider:

- 4 Pair (8) Legs
  - Spider that Resembles a Crab
- Arachnid (Spider)



## Spider Crab:

- 5 Pair (10) Legs
  - Crab that Resembles a Spider
- Crustacean



# BUTTERFLIES AND MOTHS:

- Insects
- 2 Pair (4) Wings
- Wings Covered with Scales
- Complete Metamorphosis



## BUTTERFLY

- Knobbed Antennae
- Wings Upright at Rest

Monarch Butterfly



## MOTH

- Feathered Antennae
- Wings Flattened at Rest

Luna Moth



# BEES, ANTS and WASPS:

## •Insects

- 2 Pair Wings (4) or None
- Wings Clear Membranous
- Front Wings Larger



## BEES:

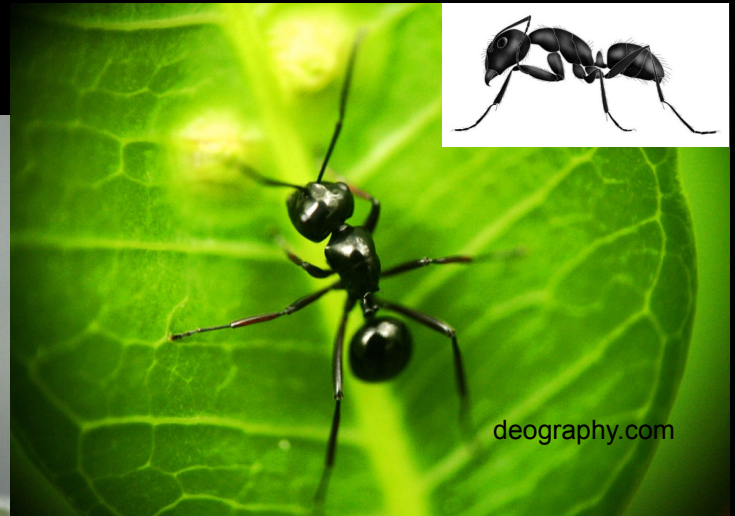
- Thick "Waist"
- Barbed Stinger



## WASPS:

- Thin "Waist"
- Smooth Stinger

[www.kleptography.com](http://www.kleptography.com)



## ANTS:

- Bumps on "Waist"
- Wings only for Reproductive Forms



# DRAGONFLIES and DAMSELFLIES:

- Insects
- 2 Pair (4) Wings
- Aquatic Nymphs



## DRAGONFLY:

- Sturdy Body
- Wings Horizontal at Rest
- Exceptional Flyer



## DAMSELFLY:

- Thin Body
- Wings Folded at Rest

# CADDISFLIES, STONE FLIES & ANT LIONS



- CADDIS FLY:**
- Hairy Membranous Wings
  - Wings Held Tent-like
  - Aquatic Larvae
- Cased in Silk & Debris



- STONEFLY:**
- Membranous Wings
  - Front Wings Narrower
  - Wings Flat Over Body
  - Aquatic Nymph

- All are Insects
- 2 Pair (4) Wings



- ANTLION:**
- Membranous Equal Wings
  - Wings with Many Veins
  - Wings Roofed Over Body
  - Clubbed Antennae
  - Sand Dwelling Larvae Eat Ants



# CRANEFLIES, MAYFLIES & MOSQUITOES

- All are Insects



- CRANEFLY**  
True Fly (2 Wings)  
•1 Pair (2)  
Membranous Wings  
•Very Long Fragile Legs



- MAYFLY:**  
•2 Pair (4)  
Membranous Wings  
•Hind Wing Smaller  
•Wings Held Above Body  
•Aquatic Nymph



- MOSQUITO**  
True Fly (2 Wings)  
1 Pair (2)

- Membranous Wings
- Feed on Plant Juices
- Females Need Blood for Egg Development
- Aquatic Larvae

# CENTIPEDES and MILLIPEDES:

- Myriapoda:
- Many Legs
  - Many Segments



## CENTIPEDES:

- 1 Pair (2) Legs per Segment
- Flattened Bodies
- Fast Moving
- Often Poisonous
- Escape or Bite when Disturbed



## MILLIPEDES:

- 2 Pair (4) Legs per Segment
- Rounded Bodies
- Slow Moving
- Coil and Play Dead when Disturbed



# ARTHROPODS:

Jointed Legs and Protective Exoskeleton

## Class Crustacea:

- 5-7 Pair of Legs
- Crabs, Lobsters and Isopods



Yeti Crab



[www.seaturtle.org](http://www.seaturtle.org)

## Class Myriapoda:

- Many Legs: 1 or 2 Pair per Body Segment
- Millipedes and Centipedes



House Centipede

## Class Arachnida:

- 4 Pair of Legs.
- Spiders, Scorpions and Ticks



Red Legged Tarantula

## Class Insecta:

- 3 Pair of Legs
- Insects



Giraffe Beetle