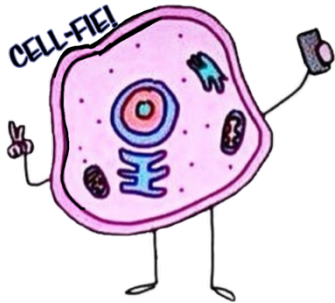


Cell Parts Review

Name

Period

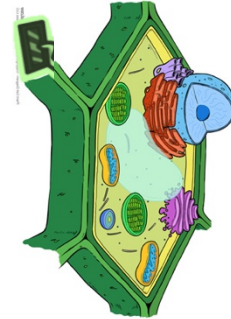
Cell Drawings: Use a straight edge to label cell organelles (parts). Line end must touch part.



\_\_\_\_\_ Cell



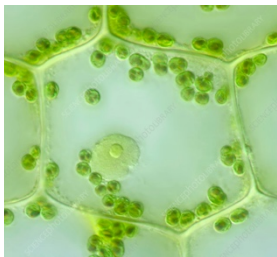
\_\_\_\_\_ Cell



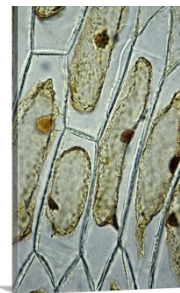
\_\_\_\_\_ Cell

Cell Photos: Cells can be very different and still have the same basic parts.

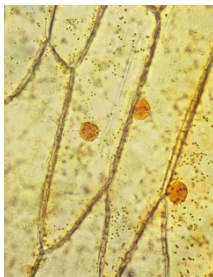
- \_1) It can be difficult to identify parts in cell photos and cell drawings. Cell photos depend on the preparation, the microscope and the light.
- \_2) All of a cell's parts will not be in the same photo. Cell drawings depend on the artist. Drawings can include parts from more than one cell.
- \_3) Use references to identify and label 3+ parts on each photo.
- \_4) Use a straight edge. Label to the right. Label lines must touch the part.



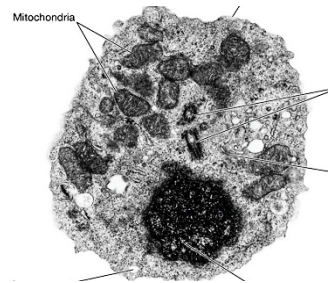
1. Elodea (Aquarium Plant) Cell



3. Onion Cells with Iodine – Drying Up



2. Onion Cells with Iodine



4. Animal Cell from Electron Microscope