

**Invertebrates: Phylogenetic Tree**

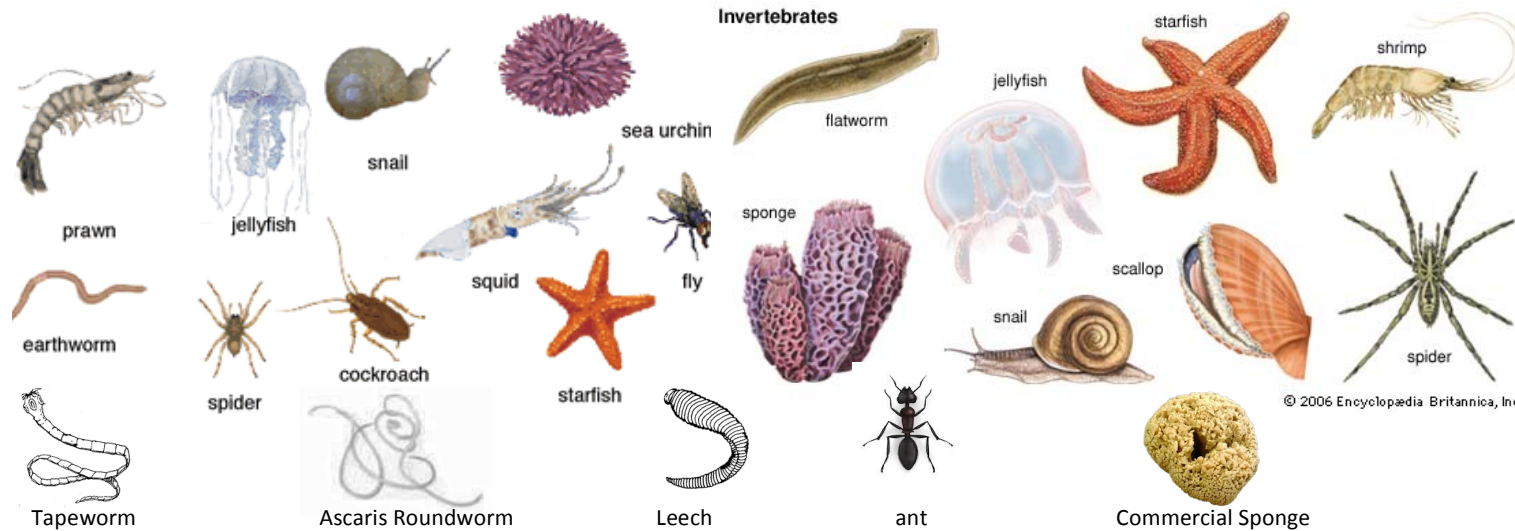
Name \_\_\_\_\_

Period \_\_\_\_\_

Add the Phylum Name and at least one image at the top of each branch of the Invertebrate Phylogenetic Tree.

1) Use one or more image to illustrate each Phylum of your Invertebrate Tree.

Cut each out and use a flap of tape, or draw your own using an outline part-for-part drawing.



2) Invertebrate groups or Phyla (plural for Phylum) include the following. Use these to label your Invertebrate Tree.

Annelida

Arthropoda

Cnidaria

Echinodermata

Nematoda

Platyhelminthes

Porifera

3) Match and use each description below with each above Phylum name.

Segmented Worms

With Exoskeleton

Stinging Celled

Pore Bearing

Spiney Skinned

Round Worms

Flat Worms

Invertebrates: Phylogenic Tree

Name

Period

Add the Phylum Name and at least one image at the top of each branch of the Invertebrate PhylogenicTree.

Phylum:

