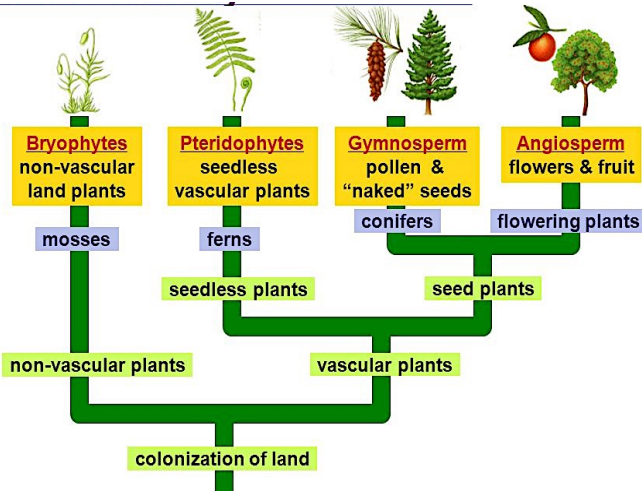


Classification of Living Things: Trees of Living Things	Name	Period
---	------	--------

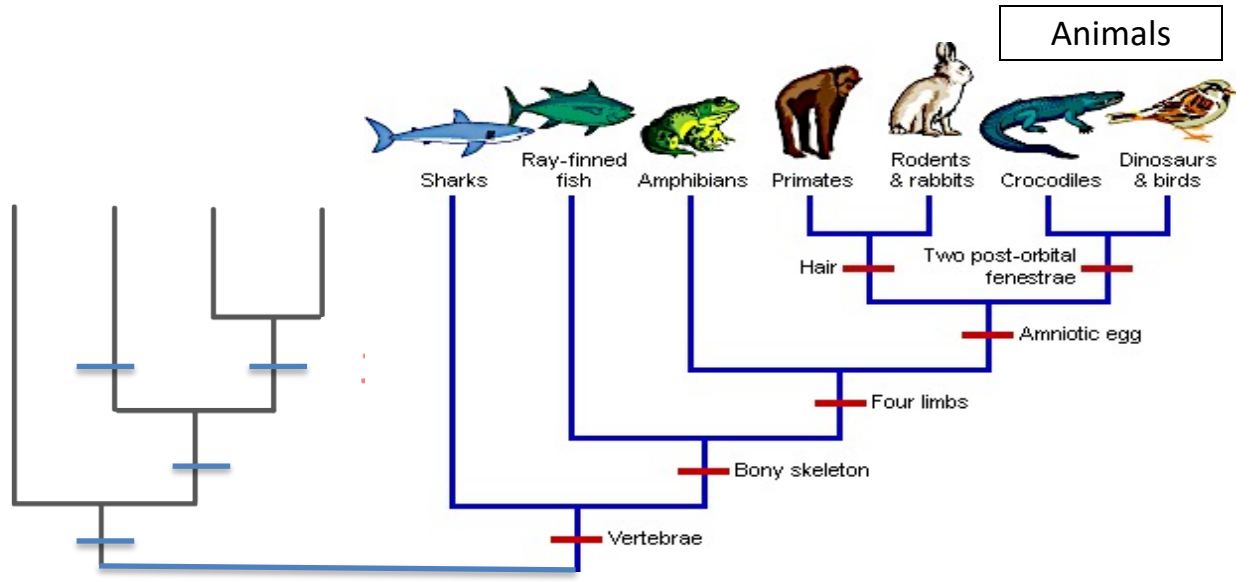
Use a straight edge for all connections.

- __ 1) Connect the lower Classification of Life Tree to the Plants Tree and the Animals Tree
- __ 2) Label the trait bars for the Invertebrates Tree, using these terms:
a) Invertebrates, b) Cells organized in tissues, c) Radial symmetry, d) Bilateral Symmetry
- __ 3) Add an example at the top of each branch of the Invertebrate Tree. Include the name and an outline drawing.
- __ 4) Add a trait bar and the label **Eukaryote** (Nucleus in each cell) to the lower Tree of Life.

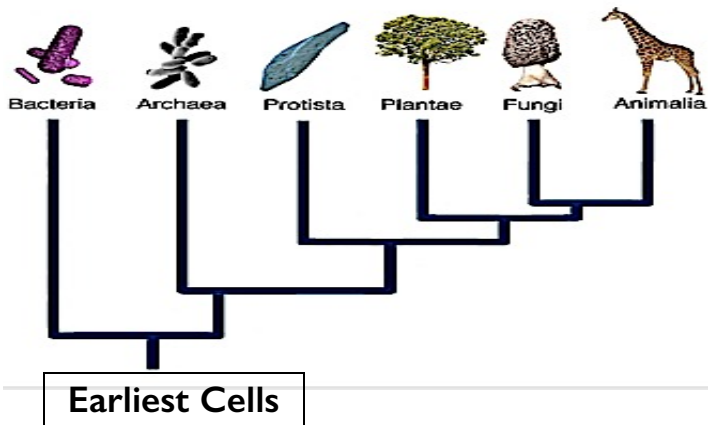
Plants



Animals



Tree of Living Things From Earliest Cells



Terms for Building Phylogenetic Trees

- Amniotic** - Have young that develop in bag of liquid
- Autotrophic** - See Photosynthetic
- Bilateral symmetry** - Have 2 similar sides.
- Eukaryote** - Have cells with nuclei
- Heterotrophic** - Obtain food from others
- Invertebrate** - Have no vertebral column
- Photosynthetic** - Make their food from light energy.
- Prokaryote** - Have cells with no nuclei
- Radial symmetry** - Have equal sections arranged around a center point
- Vertebrate** - Have spinal column or backbone