

Mitosis Images:

Name

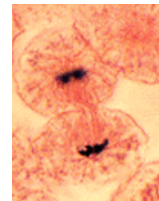
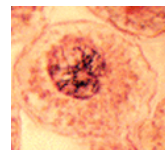
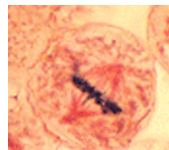
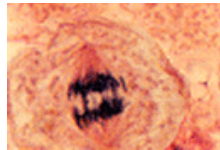
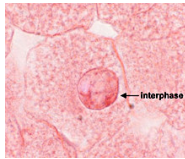
Per

- 1) Place the images in order, **using a flap of tape for each**, on another paper.
- 2) Label. The following labels are IN order. The images are NOT in order.



- 1) **Interphase:** Inter- = in-between — Or Resting
 - 2) **Prophase:** Pro- = 1st – Or getting ready
 - 3) **Metaphase:** Meta- = Together or middle
 - 4) **Anaphase:** Ana- = Up (or after)
 - 5) **Telephase:** Tele- = end (or apart)
- These are followed by **Cytokinesis** cyto- = cell -- (Cells moving apart)
And, then it starts again!

Animal Cell Mitosis



Plant Cell Mitosis (Drawing and Photograph)

