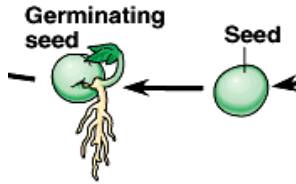


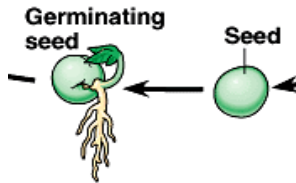
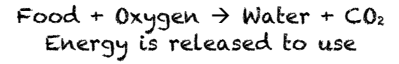
Plant Cycle Cards



Food stored in seed is used for energy.

Respiration

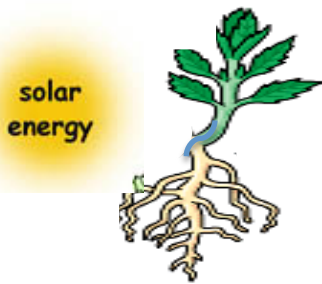
Using Oxygen to (burn) release energy from food



Embryo grows into new plant.

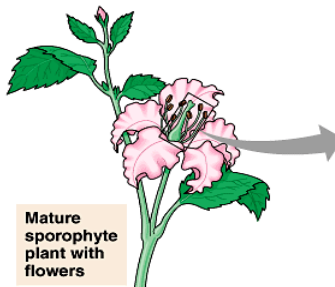
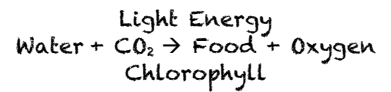
Germination

The first growth (sprouting) of a seed



Photosynthesis

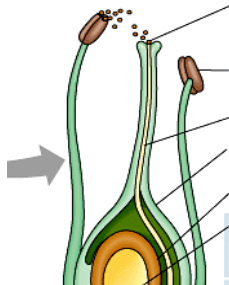
Storing Light energy in food



Mature sporophyte plant with flowers

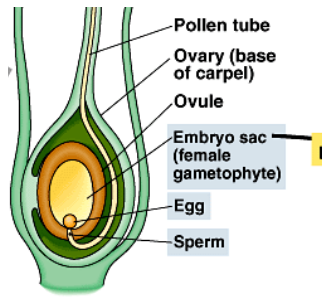
Flower Production

Forming reproductive parts that contain egg cells and/or sperm cells



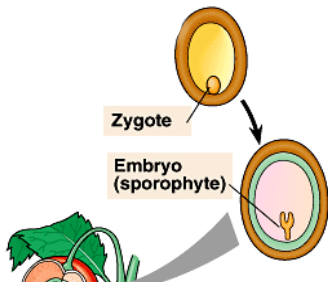
Pollination

Transferring the male pollen to the female reproductive stigma



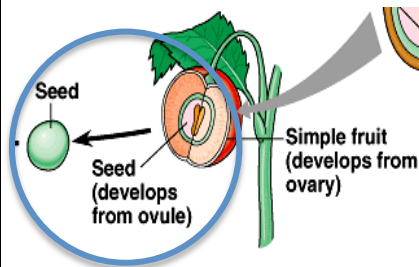
### Fertilization

The combination of an egg and a sperm cell for sexual reproduction



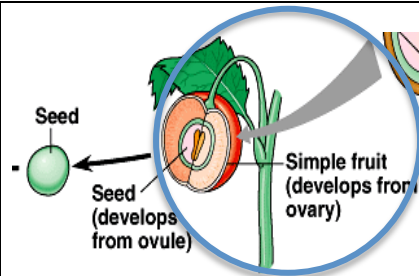
### Zygote and Embryo

Mitosis (cell division) of the zygote (fertilized egg) forms the tiny new plant.



### Seed Production

A dormant embryo with food supply and protective covering is formed.



### Fruit Production

A protective structure is formed around the seed(s) that protects and helps disperse it



### Seed Dispersal

The fruit provides a way of spreading seeds away from the parent plant. This may be popping out, wind, water, hitchhiking on animals, in animal wastes or as animal food leftovers.