

Reference: Central Science → Life → Microbes → Protists: Euglena, Amoeba

1. Watch the video: Protists: *Euglena*, *Amoeba* and *Paramecium* video.
2. Identify the 3 types of Protists and their pattern of movement. Since these are animal-like, they are also classified as **protozoa**. (**pro-** = first) (**-zoa** = animal) (**zoo-** = animal)

a) *Euglena* have a **flagellum** or **whip** that pulls them through the water.

*Euglena* have green **chloroplasts** and can make food or eat food that is dissolved in water.

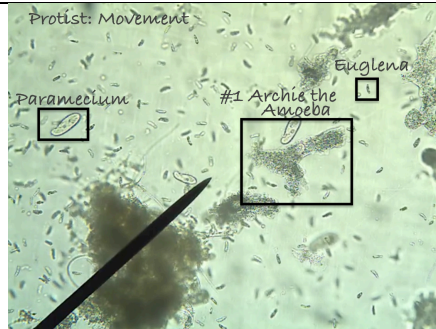
b) *Paramecium* have **cilia** or **hairs** all over their body that move them along.

c) *Amoeba* change their body shape by moving their **cytoplasm** to create new "legs" or **pseudopodia** "false feet". (**pseudo** = false) (**-pod** = foot or leg) (**-ia** = plural)

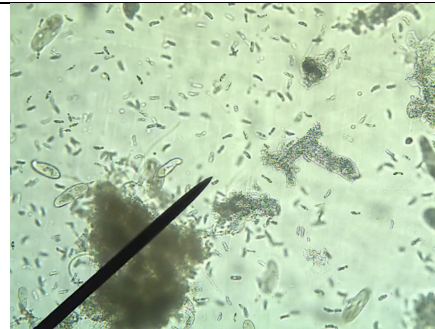
3. Stop the video at about 6 seconds to see the first image below.
4. Use a sharp pencil to outline Archie the Amoeba. Take care to draw each pseudopod. Label 1.
5. Draw each amoeba that you can identify in the frame. Label each with a number or name.
6. Stop the video at about every 50 seconds. Use scientific drawing rules to draw the outline drawings of the shapes and placement of each of the *Amoebas* you find at each stop.

7. Have checked while you have the video on the screen!

Check \_\_\_\_\_



Stopped at about 6 seconds.



Stopped at about \_\_\_\_\_ seconds.

Stopped at about \_\_\_\_\_ seconds

Stopped at about \_\_\_\_\_ seconds

Stopped at about \_\_\_\_\_ seconds

Stopped at about \_\_\_\_\_ seconds

Stopped at about \_\_\_\_\_ seconds

Stopped at about \_\_\_\_\_ seconds

