

# Systems Organization in Living Things

Name \_\_\_\_\_

Period \_\_\_\_\_

\_\_\_ 1) Use a straight line to connect each image to the correct circle (Level of Organization) of the diagram.

\_\_\_ 2) Write these abbreviations in the blanks at left to label the terms listed.

A = atom; M = molecule; Oe = organelle; C = Cell; T = tissue; On = Organ; S = system; Om = organism

\_\_\_ 3) Label the images with those terms that fit. Write the term directly under the correct image.

\_\_\_ 4) Write a sentence to remember the order from cell to organism. \_\_\_\_\_

C blood cells

\_\_\_ blood vessels

\_\_\_ carbon dioxide

\_\_\_ cat

\_\_\_ chloroplast

\_\_\_ circulatory system

\_\_\_ earthworm

\_\_\_ epidermis

\_\_\_ excretory system

\_\_\_ fish

\_\_\_ fly

\_\_\_ gills

\_\_\_ glucose

\_\_\_ heart

\_\_\_ human

\_\_\_ intestine

\_\_\_ kidney

\_\_\_ leaf

\_\_\_ lungs

\_\_\_ mitochondria

\_\_\_ nucleus

\_\_\_ oxygen,

\_\_\_ phloem

\_\_\_ respiratory system

\_\_\_ root

\_\_\_ stomach

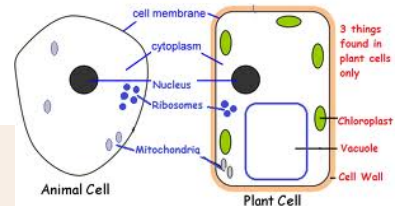
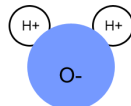
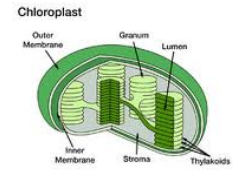
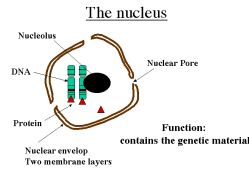
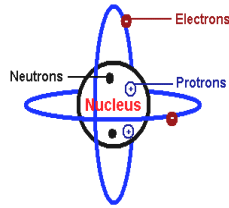
\_\_\_ tree

\_\_\_ vacuole

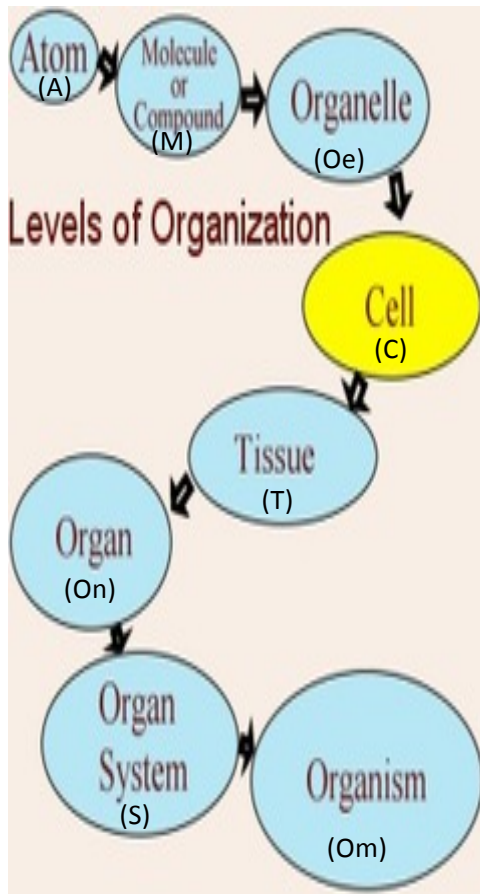
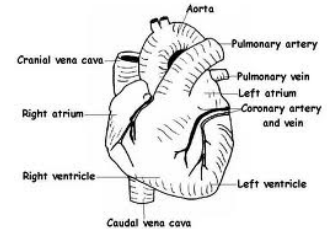
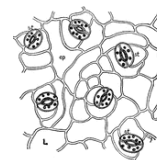
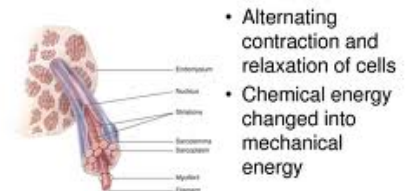
\_\_\_ vascular system

\_\_\_ water

\_\_\_ xylem



## Muscle Tissue



## EARTHWORM ANATOMY

